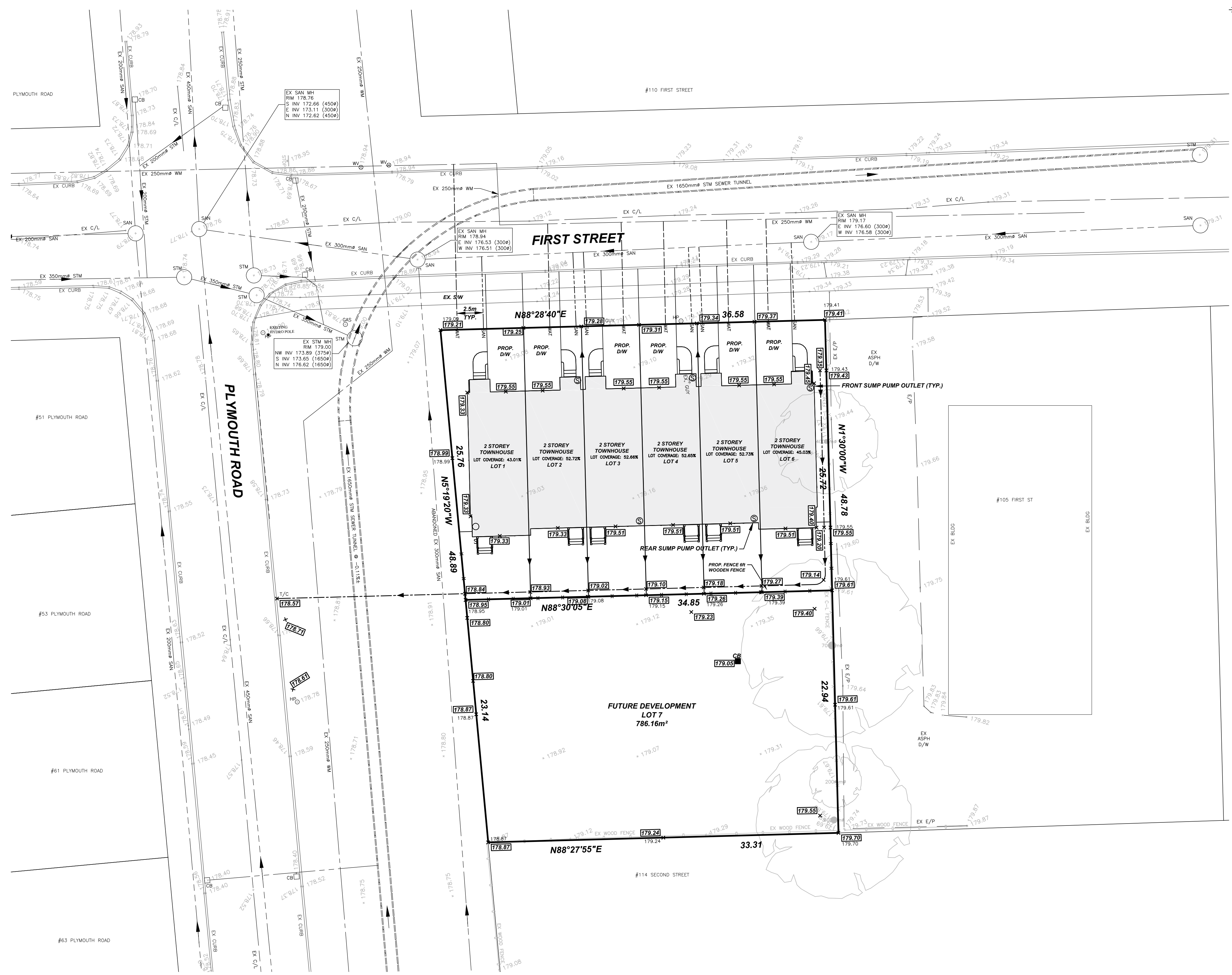


**KEY PLAN**  
N.T.S.

**LEGEND**

WV	EX WATER VALVE
WV	PROP WATER VALVE
WVC	EX WATER VALVE CHAMBER
WMC	PROP WATER METER CHAMBER
HYD	EX HYDRANT
HYD	PROP HYDRANT
CB	EX CATCHBASIN
CB	PROP CATCHBASIN
DCB	EX DOUBLE CATCHBASIN
DCB	PROP DOUBLE CATCHBASIN
CBMH	EX CATCHBASIN MANHOLE
CBMH	PROP CATCHBASIN MANHOLE
STM	EX STORM MANHOLE
STM	PROP STORM MANHOLE
SM	EX SANITARY MANHOLE
SM	PROP SANITARY MANHOLE
PLUG	EX PLUG
PLUG	PROP PLUG
CMB	EX COMMUNITY MAILBOX
CMB	PROP COMMUNITY MAILBOX
HP	EX HYDRO POLE
HP	PROP HYDRO TRANSFORMER
SL PED	EX STREET LIGHT PEDESTAL
SL PED	PROP STREET LIGHT PEDESTAL
LS	EX LIGHT STANDARD
LS	PROP LIGHT POLE
LS	PROP TACTILE WARNING PLATE
DOOR	EX DOOR
DOOR	PROP DOOR
EXIT	EX FIRE EXIT
EXIT	PROP FIRE EXIT
100.00	EXISTING ELEVATION
179.00	PROPOSED ELEVATION
X	EX WATERMAIN
X	PROP WATERMAIN
WAT	EX PROP WATER LATERAL WITH CURBSTOP
WAT	PROP WATER LATERAL
STM	EX STORM SEWER
STM	PROP STORM SEWER
STM	PROP STORM SEWER LATERAL
SS	EX SANITARY SEWER
SS	PROP SANITARY SEWER
SAN	EX PROP SANITARY LATERAL WITH CLEANOUT
SAN	PROP SANITARY LATERAL
---	PROP SANITARY SEWER
---	PROP CURB
---	PROP DEPRESSED CURB
---	SILT FENCE
---	PROP CHAIN-LINK FENCE
---	PROP WOOD FENCE
---	SUMP PUMP OUTLET TO GRADE



**NOTES:**

1. THE POSITION OF POLE LINES, CONDUITS, WATERMANS, SEWER, AND OTHER UNDERGROUND AND OVERGROUND UTILITIES AND STRUCTURES IS NOT NECESSARILY SHOWN ON THE CONTRACT DRAWINGS AND, WHERE SHOWN, THE ACCURACY OF THE POSITION OF SUCH UTILITIES AND STRUCTURES IS NOT GUARANTEED. BEFORE STARTING WORK, THE CONTRACTOR SHALL INFORM HIMSELF OF THE EXACT LOCATION OF ALL SUCH UTILITIES AND STRUCTURES AND SHALL ASSUME ALL LIABILITY FOR DAMAGE TO THEM.
2. PROPERTY LINES WERE PLOTTED USING REGISTERED PLANS AND BARS LOCATED IN THE FIELD. TO VERIFY THE ACCURACY OF THESE PROPERTY LINES, A LEGAL SURVEY SHOULD BE PERFORMED PRIOR TO CONSTRUCTION.
3. ALL CONSTRUCTION MUST COMPLY WITH THE NIAGARA PENINSULA STANDARD CONTRACT DOCUMENT.

DRAFTING	KA
DESIGN	
CHECKED BY	
APPROVED BY	



**UPPER CANADA CONSULTANTS**  
ENGINEERS / PLANNERS

30 Hanover Drive Unit 3  
St. Catharines, Ontario  
L2W 1A3  
Phone: (905)688-9400  
Fax: (905)688-5274

**FIRST STREET HABITAT, WELLAND**

**PRELIMINARY**  
**SITE SERVICING AND GRADING PLAN**

#	REVISION	DATE	INIT

CONSULTANT FILE No.	1990
DATE	2024-01-18
PRINTED	2024-11-26
SCALE	1:200 m
REF No.	
DWG No.	1990-SSGP
REV	0